

Coaxial Frequency Mixer

ZMX-7GMH

Level 13 (LO Power +13 dBm) 3700 to 7000 MHz

Maximum Ratings

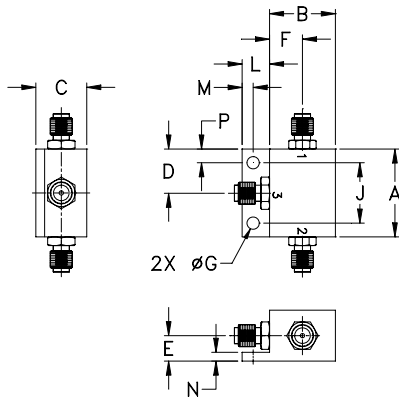
Operating Temperature	-55°C to 100°C
Storage Temperature	-55°C to 100°C
RF Power	200mW
IF Current	40mA

Permanent damage may occur if any of these limits are exceeded.

Coaxial Connections

LO	1
RF	2
IF	3

Outline Drawing



Outline Dimensions (inch/mm)

A	B	C	D	E	F	G	H
1.00	.75	.58	.50	.29	.38	.140	--
25.40	19.05	14.73	12.70	7.37	9.65	3.56	--
J	K	L	M	N	P	wt	
.687	--	.32	.13	.10	.16	grams	
17.45	--	8.13	3.30	2.54	4.06	25.0	

Features

- wide frequency range, 3700 to 7000 MHz
- low conversion loss, 4.7 dB typ.
- high L-R isolation, 37 dB typ.

Applications

- SATCOM
- instrumentation
- defense & federal communications
- SHF



CASE STYLE: BU413

Connectors	Model
SMA	ZMX-7GMH

Electrical Specifications

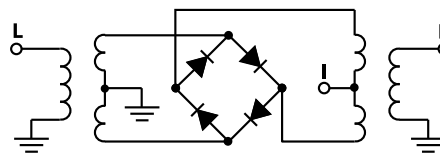
FREQUENCY (MHz)	CONVERSION LOSS (dB)	LO-RF ISOLATION (dB)		LO-IF ISOLATION (dB)		
		Typ.	Min.	Typ.	Min.	
3700-7000	DC-2000	4.7	0.20	8.0	37 20	17 8

1 dB COMP.: +9 dBm typ.

Typical Performance Data

Frequency (MHz)	Conversion Loss (dB)	Isolation L-R (dB)	Isolation L-I (dB)	VSWR RF Port (:1)	VSWR LO Port (:1)
3700.00	3730.00	4.90	32.88	11.42	4.38
3886.79	3916.79	4.95	31.48	11.82	4.42
4000.00	4030.00	4.98	33.88	11.83	4.32
4198.11	4228.11	5.03	38.98	12.38	3.29
4384.91	4414.91	5.01	37.98	12.84	2.28
4571.70	4601.70	4.73	35.25	13.27	1.74
4758.49	4788.49	4.71	35.44	14.07	2.29
5000.00	4970.00	4.35	40.91	14.80	2.26
5194.34	5164.34	4.17	39.16	15.42	2.08
5381.13	5351.13	4.15	37.97	15.73	1.97
5567.92	5537.92	4.10	35.50	15.75	1.86
5754.72	5724.72	4.11	39.07	15.80	1.82
5941.51	5911.51	4.70	35.83	16.04	1.78
6000.00	5970.00	4.55	35.31	16.19	1.72
6190.57	6160.57	4.24	34.76	16.05	1.61
6377.36	6347.36	4.20	34.16	16.17	1.51
6564.15	6534.15	4.27	33.69	16.22	1.43
6750.94	6720.94	4.27	33.14	16.57	1.39
6937.74	6907.74	4.42	31.48	16.81	1.39
7000.00	6970.00	4.39	30.37	16.87	1.38

Electrical Schematic



Mini-Circuits
ISO 9001 ISO 14001 AS 9100 CERTIFIED

P.O. Box 350166, Brooklyn, New York 11235-0003 (718) 934-4500 Fax (718) 332-4661 The Design Engineers Search Engine www.minicircuits.com Provides ACTUAL Data Instantly at [minicircuits.com](http://www.minicircuits.com)

IF/RF MICROWAVE COMPONENTS

For detailed performance specs & shopping online see web site

Notes: 1. Performance and quality attributes and conditions not expressly stated in this specification sheet are intended to be excluded and do not form a part of this specification sheet. 2. Electrical specifications and performance data contained herein are based on Mini-Circuit's applicable established test performance criteria and measurement instructions. 3. The parts covered by this specification sheet are subject to Mini-Circuit's standard limited warranty and terms and conditions (collectively, "Standard Terms"); Purchasers of this part are entitled to the rights and benefits contained therein. For a full statement of the Standard Terms and the exclusive rights and remedies thereunder, please visit Mini-Circuit's website at www.minicircuits.com/MCLStore/terms.jsp.

REV. A
M151107
ZMX-7GMH
DJ/TD/CP/AM
151009
Page 1 of 2

